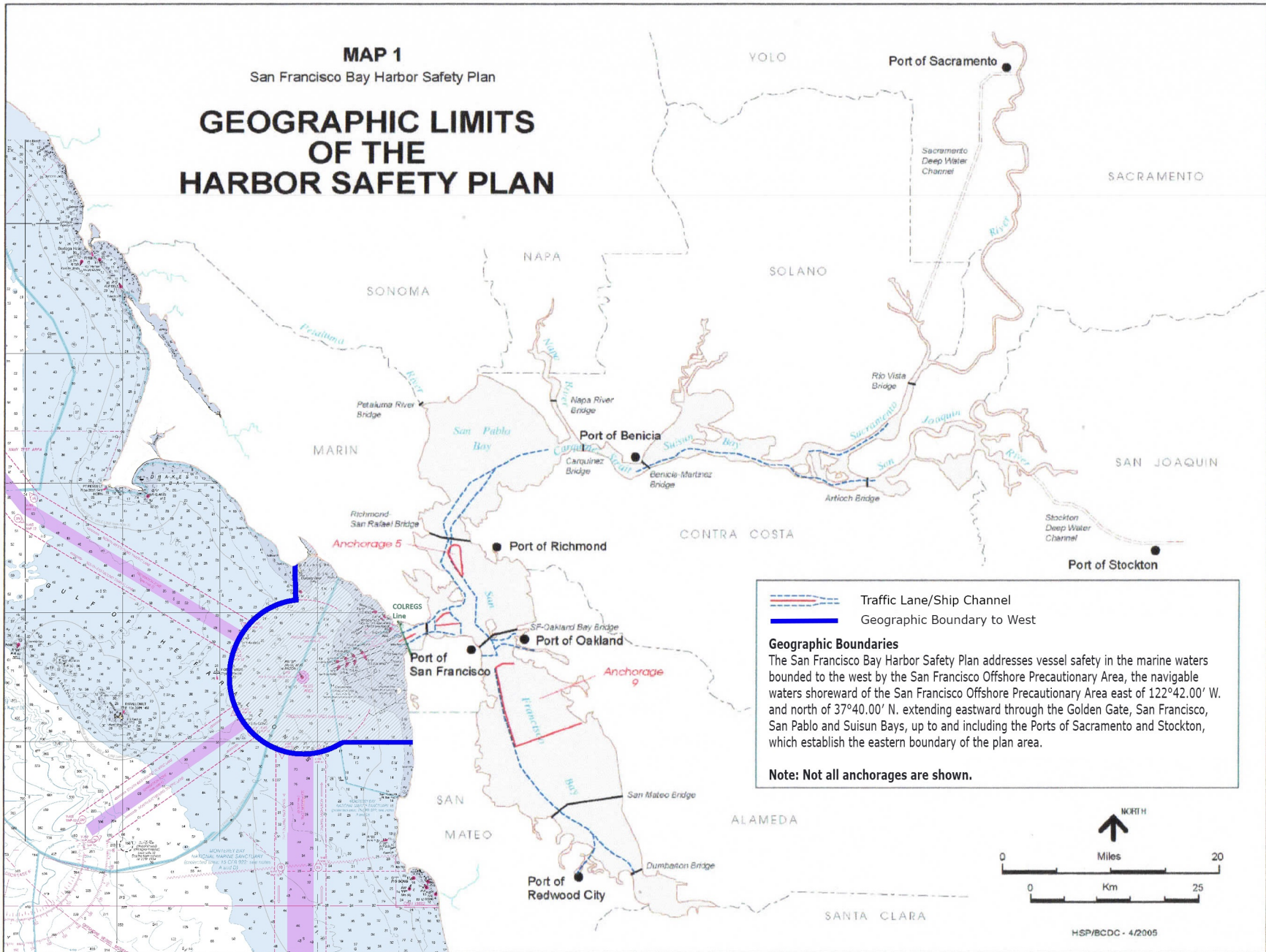


MAP 1  
San Francisco Bay Harbor Safety Plan

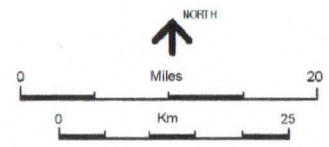
# GEOGRAPHIC LIMITS OF THE HARBOR SAFETY PLAN



--- Traffic Lane/Ship Channel  
 --- Geographic Boundary to West

**Geographic Boundaries**  
 The San Francisco Bay Harbor Safety Plan addresses vessel safety in the marine waters bounded to the west by the San Francisco Offshore Precautionary Area, the navigable waters shoreward of the San Francisco Offshore Precautionary Area east of 122°42.00' W. and north of 37°40.00' N. extending eastward through the Golden Gate, San Francisco, San Pablo and Suisun Bays, up to and including the Ports of Sacramento and Stockton, which establish the eastern boundary of the plan area.

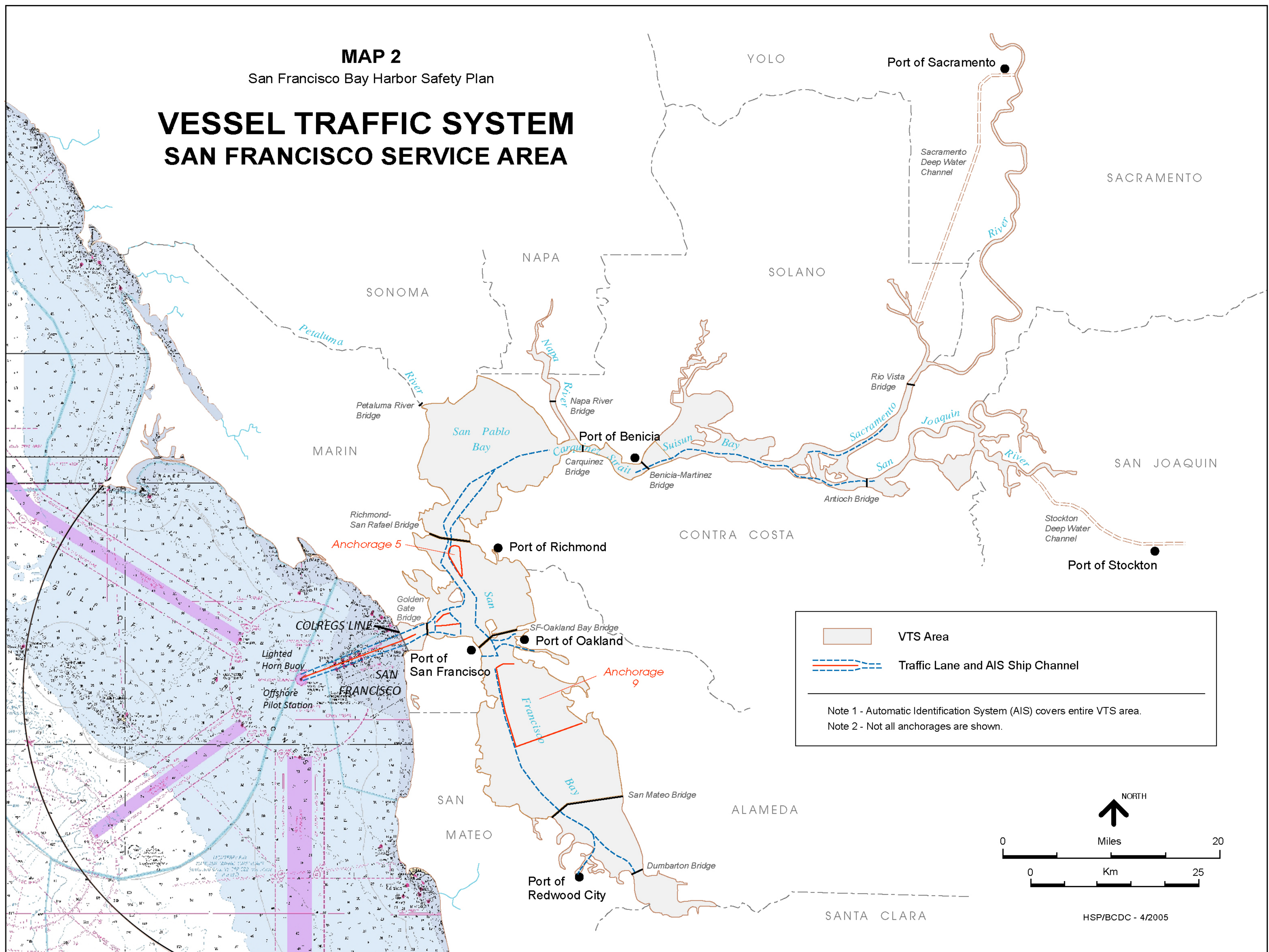
**Note: Not all anchorages are shown.**

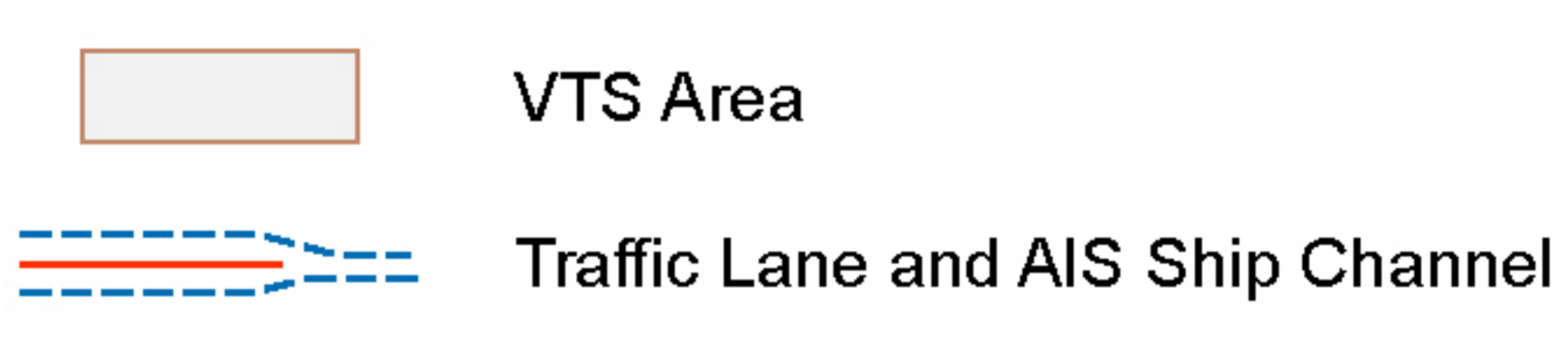


# MAP 2

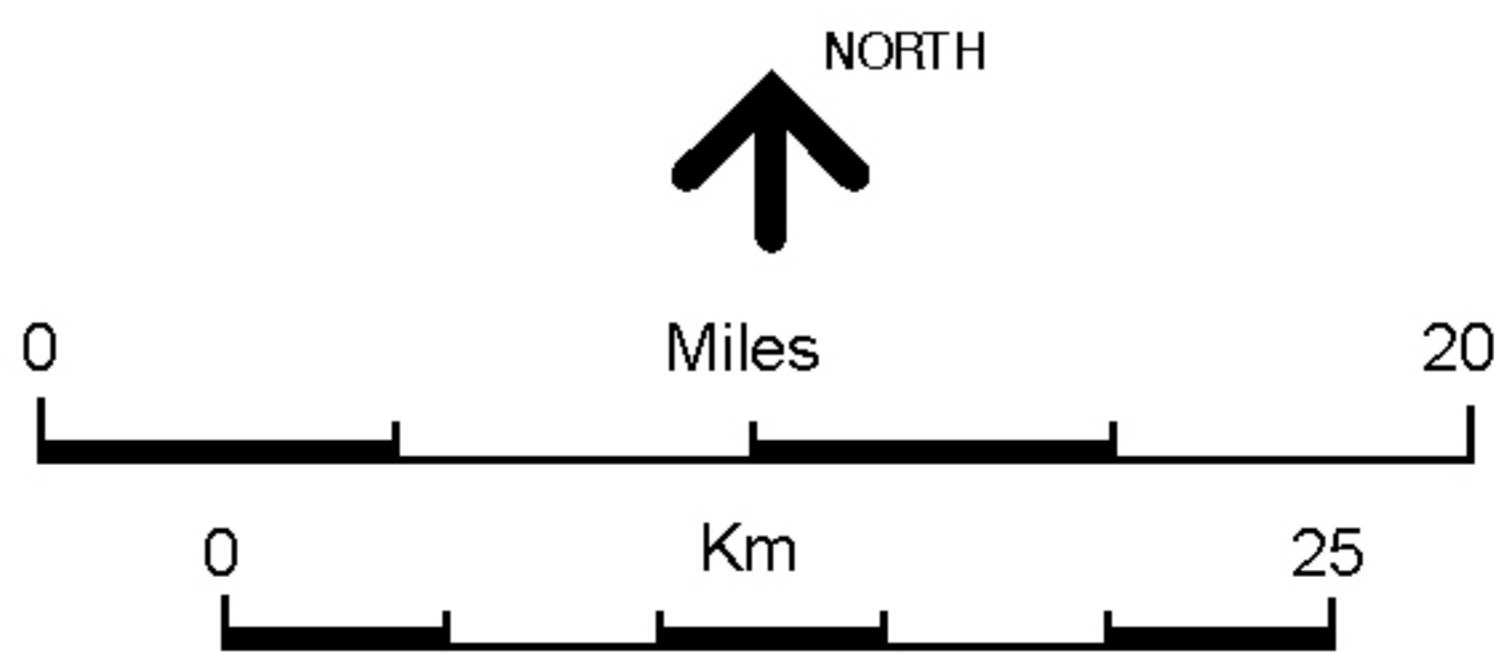
San Francisco Bay Harbor Safety Plan

## VESSEL TRAFFIC SYSTEM SAN FRANCISCO SERVICE AREA



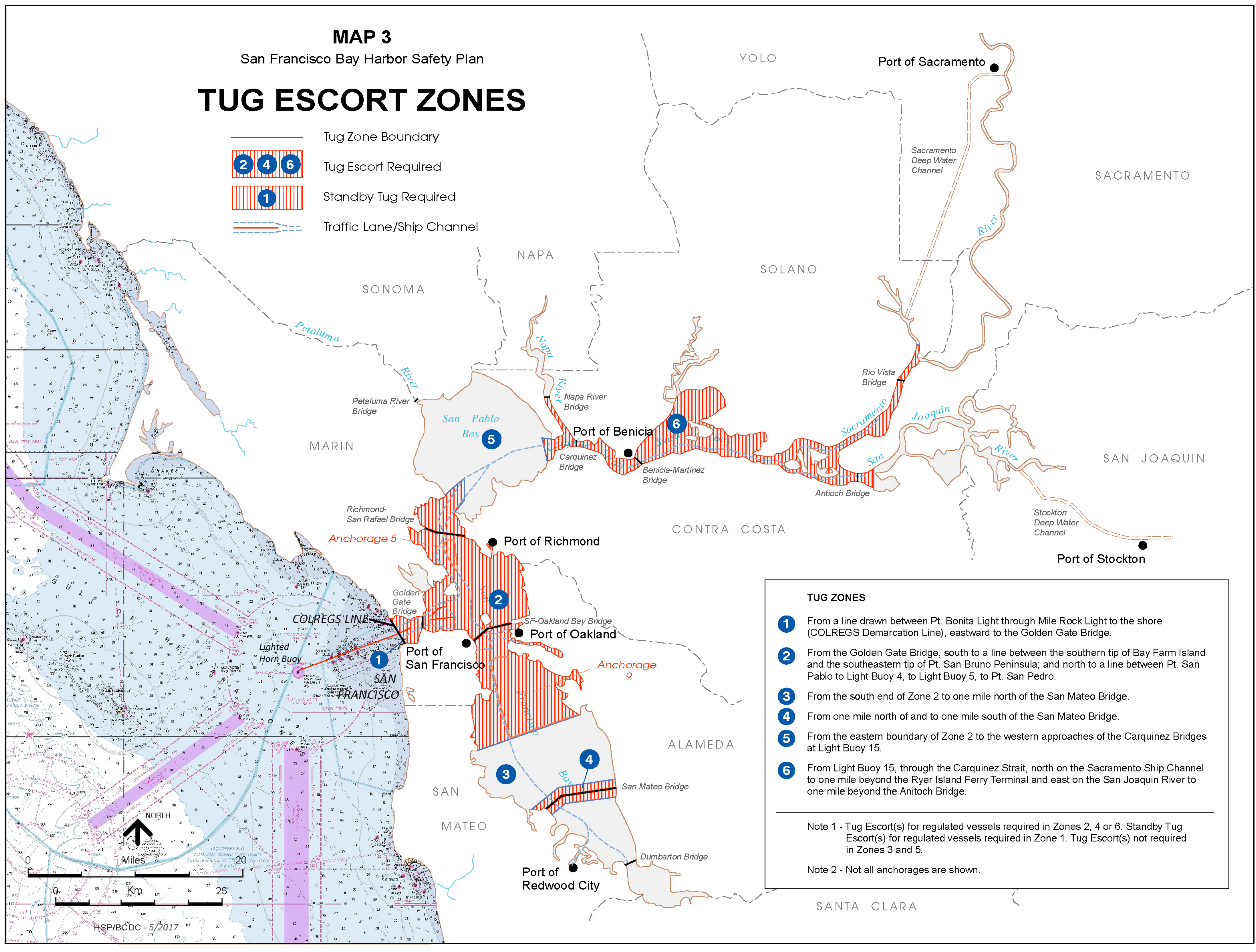


Note 1 - Automatic Identification System (AIS) covers entire VTS area.  
Note 2 - Not all anchorages are shown.



# MAP 3 San Francisco Bay Harbor Safety Plan TUG ESCORT ZONES

-  Tug Zone Boundary
-  Tug Escort Required
-  Standby Tug Required
-  Traffic Lane/Ship Channel



- TUG ZONES**
- 1** From a line drawn between Pt. Bonita Light through Mile Rock Light to the shore (COLREGS Demarcation Line), eastward to the Golden Gate Bridge.
  - 2** From the Golden Gate Bridge, south to a line between the southern tip of Bay Farm Island and the southeastern tip of Pt. San Bruno Peninsula; and north to a line between Pt. San Pablo to Light Buoy 4, to Light Buoy 5, to Pt. San Pedro.
  - 3** From the south end of Zone 2 to one mile north of the San Mateo Bridge.
  - 4** From one mile north of and to one mile south of the San Mateo Bridge.
  - 5** From the eastern boundary of Zone 2 to the western approaches of the Carquinez Bridges at Light Buoy 15.
  - 6** From Light Buoy 15, through the Carquinez Strait, north on the Sacramento Ship Channel to one mile beyond the Ryer Island Ferry Terminal and east on the San Joaquin River to one mile beyond the Antioch Bridge.
- Note 1 - Tug Escort(s) for regulated vessels required in Zones 2, 4 or 6. Standby Tug Escort(s) for regulated vessels required in Zone 1. Tug Escort(s) not required in Zones 3 and 5.
- Note 2 - Not all anchorages are shown.